

Our Mission of Love



OUR MISSION OF LOVE

NUESTRA ESCUELA
(OUR SCHOOL) IS FOUNDED
ON LOVE, WHERE YOUTH AND
ADULTS, LIKE QUIXOTE,
ACCOMPLISH THEIR DREAMS
AND GOALS, CREATING
A BETTER WELLBEING
FOR THEIR FAMILIES.
SO HELP US GOD!

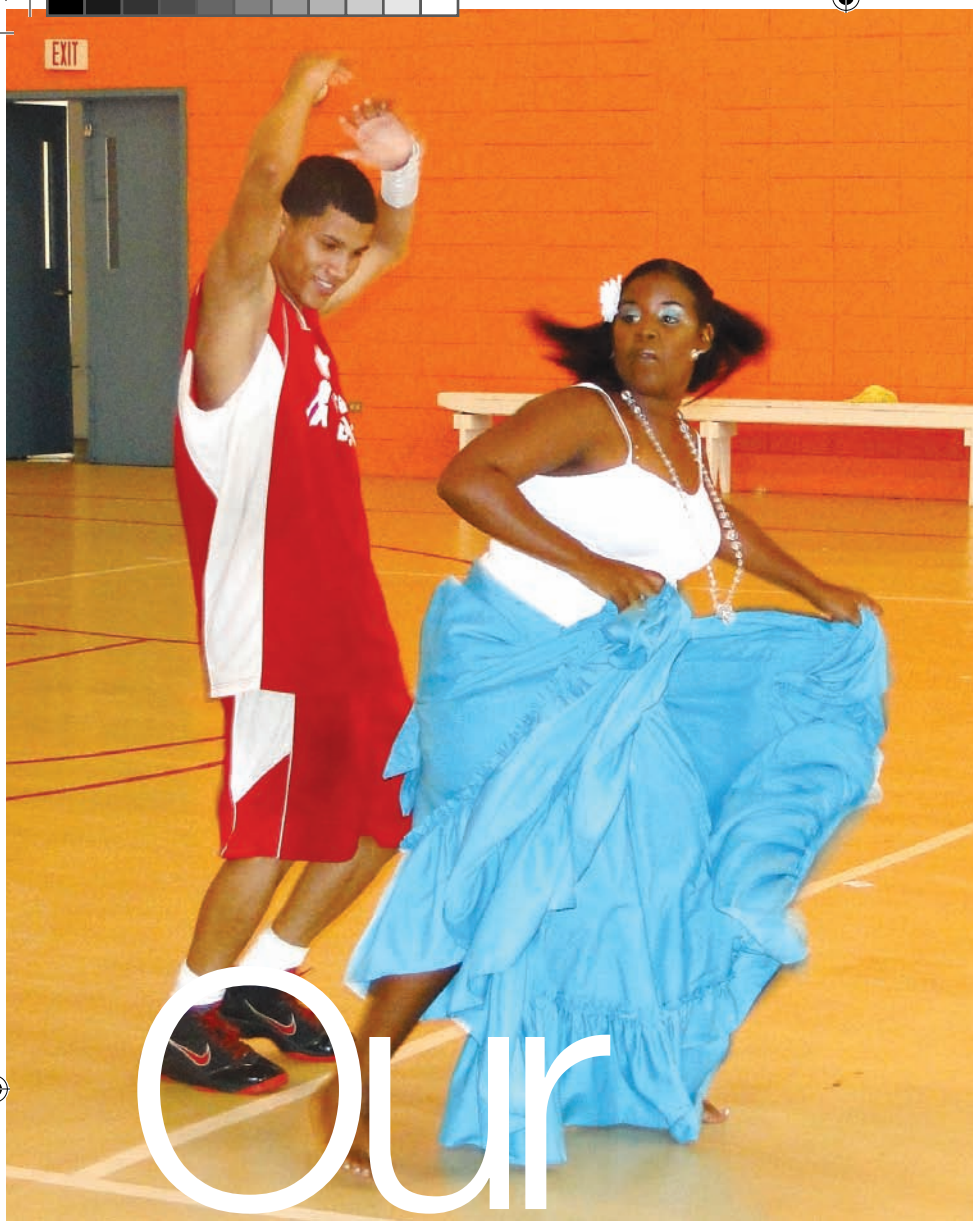


VALUES



- Sense of Belonging
- Love
- Commitment
- Effort
- Loyalty
- Aspiration
- Wellbeing
- Family Unity
- Faith
- Respect
- Peace
- Joy
- Solidarity
- Resilience





Our Educational Culture

Our School is greatly inspired by the popular education movement. Paulo Freire, exponent of this postulate, is influenced by historical education and social transformation philosophers, including Socrates and the great thinkers from Ancient Greece. This has led our organization to adopt the Socratic dialogue as part of our methodology.

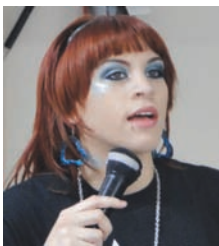
Services Model



The following model organizes the function of services of Nuestra Escuela, Sustainable Support Center for the Youth and their Family.



1. Human contact
2. Vital Essence Retreat
3. Complete evaluation
4. Personalized strategic plan
5. Improve the physical, psychological and social conditions, and to modify attitudes, values and behavior
6. Basic civic, ethics and academic skills
7. Personalized education
8. Sports, arts, talents and technology
9. Training for the integration to the workforce
10. The undertaking of the plan in the personal, means of support, family, community, nation and social aspects
11. Personal achievement, celebration, commitment to reciprocate what one has received
12. Establishment of the Model



Graduate Profile



Physically and emotionally healthy human beings, with spiritual and ethical values, affective and responsible bonds with their partner and family, committed with the development of a democratic society, culture of peace and the improvement of their community. They will develop intellectually as citizens with the knowledge and understanding of the society and culture in which they live and of other civilizations, past and present, therefore they will systematically study nature, society, culture and the development of values, capabilities and understandings that contribute to the construction of a democratic society. They will also acquire the abilities and skills that will enable them to become entrepreneurs for productive careers and occupations.



Structure of Nuestra Escuela

ACADEMIC SUPPORT AREA



One of the supporting areas of Nuestra Escuela is the Academic Area, which is composed by the teachers of different disciplines, who offer the participants the courses that will help them to accomplish a dream: their high school diploma. To achieve this, the teachers become motivational beings that develop their classes using diverse strategies, taking into account the life experiences of the students, their characteristics and plans in order to make the information relevant for the participant. The educational exercise that is practiced in every classroom uses the diverse learning styles that the participant may have as one of the principal foci of our services model, without leaving behind the requirements of the subject that is being taught. The curricular, co-curricular and extracurricular experiences of every course provide the participant with new opportunities that will help them develop as healthy and responsible citizens of Puerto Rican society.

ADMINISTRATIVE SUPPORT AREA



The Administrative Support Area is in charge of conducting, orientating and monitoring the resources, accounting and financial services in an effective way. It is in charge of the budget and of the personnel, as well as the proposal, diffusion and the advice for the implementation of new procedures, methods and work systems related with the area of their expertise. This Area guarantees an efficient help to the organizational management through an adequate, transparent and rational administration of the material, financial and economic resources and of all services. It channels the human potential assigned to the diverse areas of Nuestra Escuela, committed with the appropriate and efficient fulfillment of the organizational objectives, based on ethical principles and values consistent with the requirements of institutional policies.

BIO-PSYCHO-SOCIAL SUPPORT AREA



This support area aims to provide the required services to prepare and to enable the participants to effectively be part of the bio-psycho-social and academic areas. Through an exhaustive discernment process that includes home visits, activities of personal development, support in the implementation of the strategic plan, the constant monitoring of the defined goals and help in the transition to the labor force, this area creates an impact in the lives of the participants. Each young student reaches their proposed objectives through a transformation process that makes them responsible citizens committed to a peaceful, fair and democratic society.

MANAGEMENT SUPPORT AREA



The leaders of each support area and the coordinators of every center form the Management Group of Nuestra Escuela. This crew has the responsibility of coordinating and supervising the implementation of the services model, the strategic plan of the organization and the semiannual work plan. The plans are elaborated and democratically approved in retreats where the personnel, the Board of Directors, students leaders, family and community participate.



“Each young student reaches their proposed objectives through a transformation process that makes them responsible citizens committed to a peaceful, fair and democratic society.”

“The Workshop for Alternative Communication and Popular Education (Taller CEPA) of NE supports young people in Puerto Rico to identify and develop their talents through creative educational experiences and workshops in areas such as arts, sports and production in mass media.”



Workshop for Alternative Communication and Popular Education (CEPA)



The Workshop for Alternative Communication and Popular Education (Taller CEPA, acronym) of NE supports young people in Puerto Rico to identify and develop their talents through creative educational experiences and workshops in areas such as arts, sports and production in mass media. It also produces media content tools to diversify and broaden the scope of education and social activism of the organization.

tallercepa.blogspot.com

www.youtube.com/tallercepa

JUVENTUD SIRVE



This area of support is in charge of enabling and supporting the participants of Juventud Sirve (Youth Serves, in English) and providing the mechanisms for them to acquire the necessary skills to develop as entrepreneurs. Its personnel coordinates and supports the successful development of entrepreneurial activities of the participants. Through the development of educational programs it motivates young entrepreneurs to forge the development of cooperative enterprises.

www.nuestraescuela.org



Justo Yris



Nuestra Escuela was founded on August 11, 2000. It is the legacy of Ana Mercedes Méndez Jiménez, daughter of Justo Méndez Arámburu. Ana Mercedes transcended into eternal life when she was only fifteen years old, on September 10, 1997. In a dream visit to Justo, she told him "Daddy, we are going to make a school." Justo's answer was "Darling, how are we going to make a school?" Her response was "Yes, dad, we are going to make a school, Our School, just let yourself go." Justo shared the experience with his wife, Ana Yris Guzmán Torres, they immediately took on what was entrusted to them and the rest is history.

Nuestra Escuela has five centers: Caguas Downtown, La Barra (a rural neighborhood in Caguas), Loíza, Vieques, and in San Juan, our preschool, Nuestra Escuelita. It serves over 300 young people and their families in a bio-psycho-social and academic support where students complete their high school degree and continue to study in universities or technical colleges or join the workforce.

Nuestra Escuela has received the Sor Isolina Ferré Medal for Excellence in the Service to Others, and the Award for Solidarity from Miranda Foundation. It has been classified as an Exemplary Program by the Department of Education of Puerto Rico and "Best Practice Project" by the Department of Education of the United States of America. Presently, it is celebrating a Decade of Our Mission of Love and every September 10, the graduation takes place in homage to the Inspiration of this endeavor, Ana Mercedes.



Support and Learning Centers in Puerto Rico



Nuestra Escuela



Institutions that support us:

- Alliance for Alternative Education of Puerto Rico
- Department of Education of Puerto Rico
- Banco Popular Foundation
- Reliable Foundation
- Ángel Ramos Foundation
- Puerto Rico Community Foundation
- Miranda Foundation
- Ricky Martin Foundation
- Virtual Educational Resources Network, VERNET
- Autonomous Municipality of Caguas
- Municipality of Loíza
- Municipality of Vieques

We are members of/or participate in:

- National Coalition of Alternative Community Schools
- Alternative Education Resources Organization Conference
- International Democratic Education Conference
- Education Cities Initiative

Awards and Recognitions:

- School that Makes School, Ibero American States Organization
- Award for Solidarity, Miranda Foundation
- Sor Isolina Ferré Medal for the Excellence in the Service to Others
- Exemplary Program, Department of Education of Puerto Rico
- Best Practice Project, USA Department of Education

Nuestra Escuela, Inc.
San Claudio Avenue #352
Box 133, San Juan, Puerto Rico 00926
Telephone: 787-258-0636
Fax: 787-746-5852

Web Pages:
www.nuestraescuela.org
tallercepa.blogspot.com/
www.youtube.com/nuestraescuelainc
email: info@nuestraescuela.org

NOTICE OF NONDISCRIMINATION AGAINST STUDENTS POLICY

Nuestra Escuela, Inc. admits students of any race, color, national and ethnic origin to all the rights, privileges, programs and activities generally agreed o available to the students in the school. The school does not discriminate by race, color, national or ethnic origin in the administration of its educational policies, admissions, scholarships or other programs.